



EEA Cultural grants - Icelandic Scene and Coastal Cultural Heritage

ICELAND

Egill Thor Nielsson

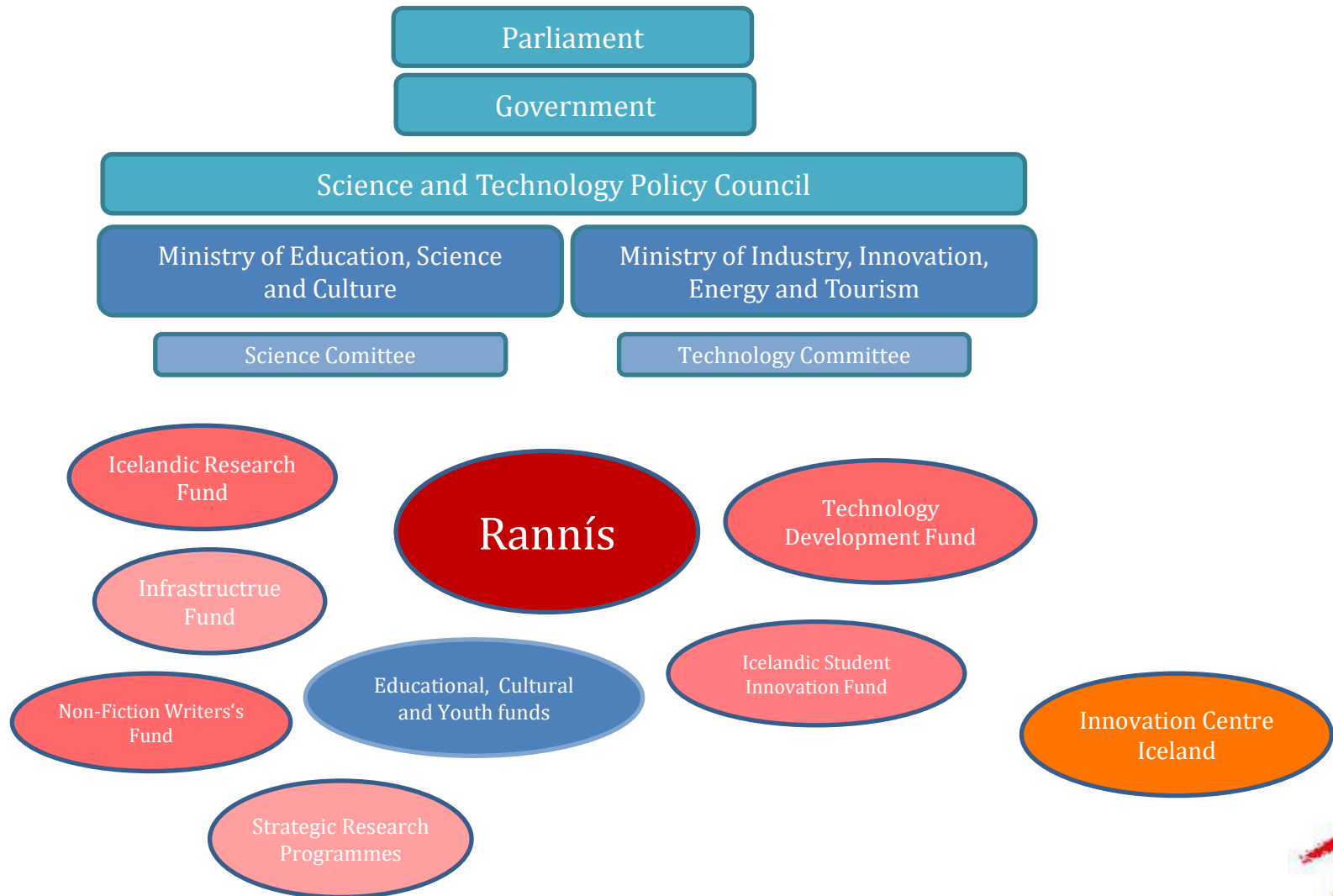
egill@rannis.is

The Icelandic Centre for Research

rannis.is

- The Icelandic Centre for Research - Rannis supports administers and promotes competitive funds in the field of research, innovation, education and culture.
- RANNIS co-ordinates and promotes Icelandic participation in European programmes such, as [Horizon 2020](#), [Erasmus+](#) [Creative Europe](#), Nordplus and **EEA grants**.
- Rannis reports to the Ministry of Education, Science and Culture.

Science and Innovation system in Iceland



The Icelandic Centre for Research

rannis.is

- Around 50 employees : 1/3 male and 2/3 female
 - Operating budget 2018 : ~ 750 MISK (6 M€)
 - Volume of national funds managed by Rannís 2018:
 - Research and Innovation 5.2 BISK (42 M€)
 - Tax R&D advantage to companies 2.6 BISK (21 M€)
 - Education, youth and sport 1.7 BISK (14 M€)
 - **Art and culture 1.0 BISK (8 M€)**
- International programs (indirectly) 2.3 BISK (18 M€)
- **Total 12.7 BISK (102 M€)**
 - 75% research and innovation
 - 25% education and culture

RANNIS / THE ICELANDIC CENTRE FOR RESEARCH ORGANISATIONAL CHART 2019

Science & Technology Policy Council

Ministry of Education, Science and Culture

Special assignments

- Secretary to the STPC
- Research & International
- IASC

General Director

Administration

Finances, human resources, communications, data management, quality, computer system, canteen

International Division

- Horizon 2020
- COST
- EEA Grants
- Euraxess
- NordForsk
- Arctic Research and Studies
- Jules Verne
- Arctic issues
- Other international research cooperation

Research and Innovation Division

- Research Fund
- Technology Development Fund
- Infrastructure Fund
- Student Innovation Fund
- Strategic Research Programmes
- Other national R&I competitive funds
- Quality Framework for Higher Education
- Application system

Education and Culture Division

- Erasmus+
- Creative Europe
- Nordplus
- Europass
- Euroguidance
- Eurodesk
- EPALÉ
- eTwinning
- National education and culture funds
- Study Abroad and Study in Iceland

RANNIS – EEA Grants services and activities outside Iceland

- **Rannís has the role of a Donor Programme Partner (DPP)** in several countries/ programmes providing expert advice on programme creation and implementation.
 - Portugal (Innovation)
 - Romania (Research)
 - Poland (Education)
 - Czech Republic (Culture)
- **Facilitates cooperation** - Rannís is an access point helping applicants from all countries receiving EEA-grants get into contact with Icelandic entities
- **Presents Icelandic systems and structures abroad** increasing their visibility and attractiveness in terms of cooperation.

Cultural Projects Fields through the Years

- Music
- Visual arts
- Performance Art
- Media /cinema
- **Cultural/Intercultural /Cultural heritage**
- Universities

The Sun Voyager in Reykjavík



Coastal Cultural heritage in Iceland

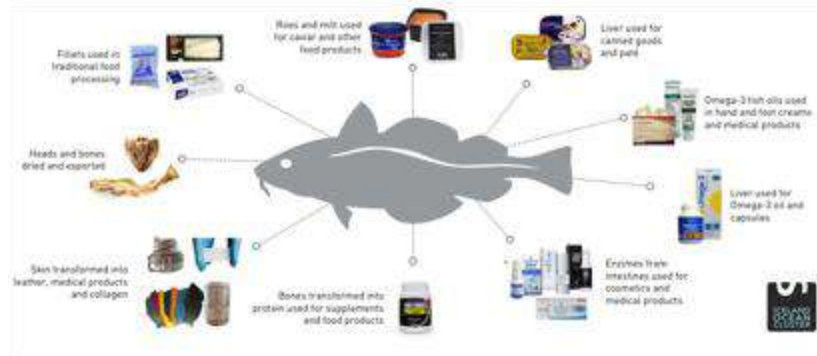
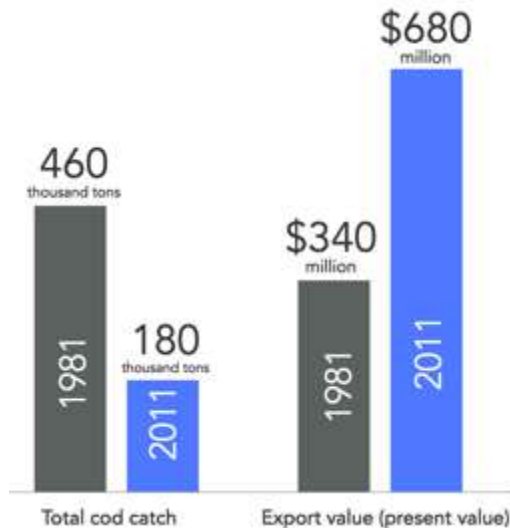
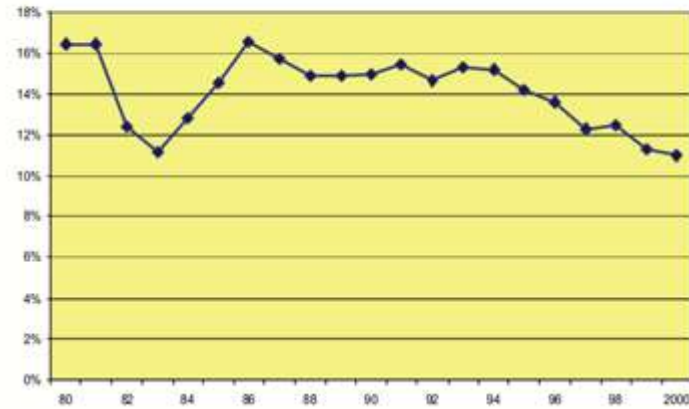
- Icelanders have from the time of settlement depended on fishing.
- Settlement at Faxaflói Bay was founded on fishing and fish processing. Since the 19th century, the growth of the cities Reykjavík and nearby Hafnarfjörður was largely based on the fisheries, as well as improved living conditions in the 20th century.
- The fishing industry has been the foundation of prosperity in Iceland.

Economic Aspects of Coastal development: Social and Environmental Aspects

Fishing labour and fish exports (as a percentage of total labour and merchandise exports) (Source: Statistics Iceland 1997)



Contribution of the fishing industry to the GDP (Source: National Economic Institute 1995, 2002).



More value – less catch / eliminating waste

Grandi, Reykjavik: Intertwining coastal cultural heritage and blue growth



Reykjavik Maritime Museum
- Fish & folk; 150 years of fisheries
The exhibition is about the history of the Icelandic fisheries, from the time when rowing boats gave way to large fishing vessels. This rich history is told from the perspective of Iceland's biggest fishing port, Reykjavík



Source: Iceland Ocean Cluster; Reykjavík City Museum

Shift, examples: Husavik & Siglufjordur (Northeast) - Resilience in coastal societies

- Siglufjordur - The Herring Era Museum -Iceland's Herring Adventure (1867-1968)
- Husavik - “From good to eat to good to watch: whale watching, adaptation and change in Icelandic fishing”



East Coast: Ströndin Studio



Ströndin Studio is an experimental center for photography located in a former herring fish factory in Seyðisfjörður, Iceland.

Founded by Jessica Auer, photography professor from Montreal, and Zuhaitz Akizu, historian and archeologist from the Basque Country, Ströndin Studio is a research center which focuses on the link between photography and cultural heritage.

To date, we have refurbished 226 m² of the “Ströndin” herring factory, converting it into a gallery, darkroom and workspace. We host small group workshops, artist residencies, exhibitions, and organize photographic excursions around East Iceland.

Coastal Cultural Heritage Organizations

- The Cultural Heritage Agency of Iceland
en.minjastofnun.is
- National museum of Iceland
www.thjodminjasafn.is/english/
- Reykjavik Maritime Museum
<http://borgarsogusafn.is/en/reykjavik-maritime-museum>
- The Herring Era Museum in Siglufjordur
www.sild.is/en
- The Husavik Whale Museum
www.hvalasafn.is/en/
- Saltfish Museum in Grindavik
www.sjominjar.is/syningar-og-setur/grindavik

Cont.

- Verksmidjan Hjalteyri
www.verksmidjanhjalteyri.com
- The Icelandic Lighthouse Society
www.vitafelagid.com
- Byggdasafn Vestfjarda
www.nedsti.is
- The Technical Museum of East Iceland
www.seydisfjordur.org
- Ströndin Studio www.strondinstudio.com
- Evris www.evris.is

Municipal Institutions and Useful Adresses

Reykjavik.is – theatres, museums, galleries,

Akureyri.is - theatres, museums, galleries,

Kopavogur.is – Hafnarfjordur.is –
reykjanesbaer.is

Promote Iceland, Islandsstofa.is

- www.bacalhaudaislandia.pt/

Harpa Reykjavik Concert Hall and Conference
Centre – Harpa.is



Conclusions

- Iceland is built on resilient coastal communities – “it’s in our DNA”
- Synergies with many of the Portuguese and Norwegian partners in regards to “Local development through safeguarding and revitalization of coastal cultural heritage”
- Looking forward to facilitate cooperation

Contact point

- Ragnhildur.zoega@rannis.is
- Egill.thor.nielsson@rannis.is
 - EEAgrants.org,
 - Rannis.is
- Borgartúni 30, 105 Reykjavík. Iceland

Thank you!