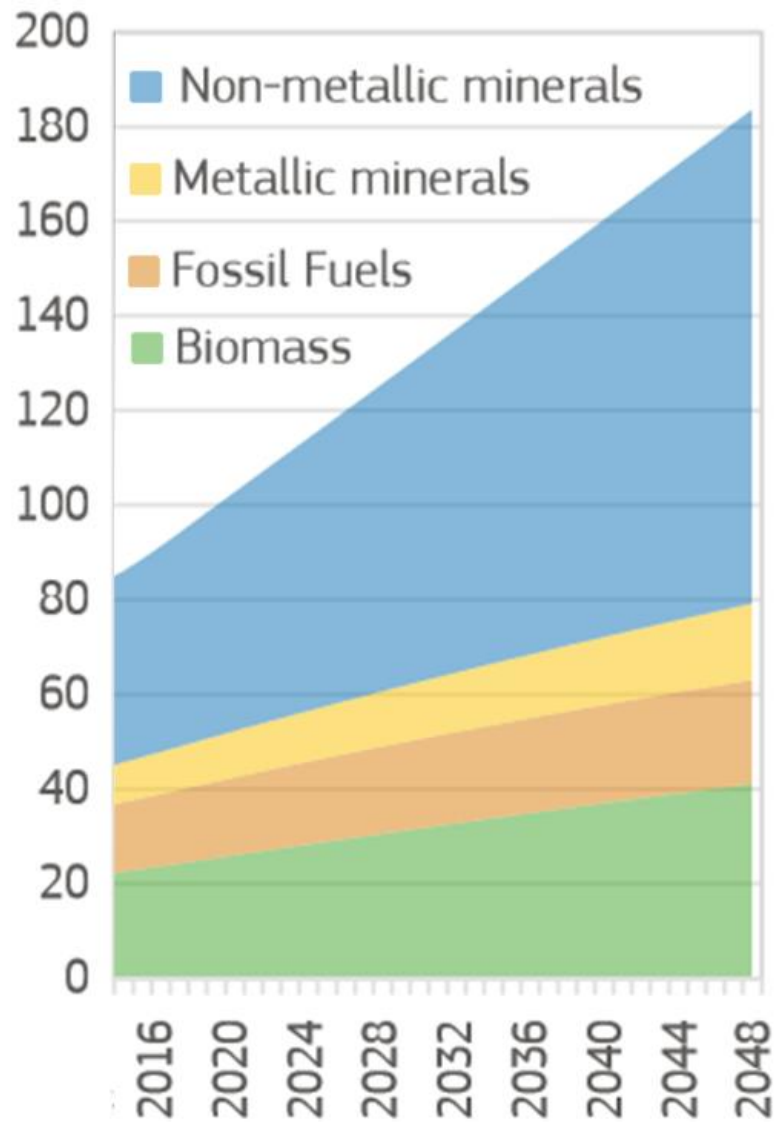




CLOSE TO RESOURCES RECOVERY

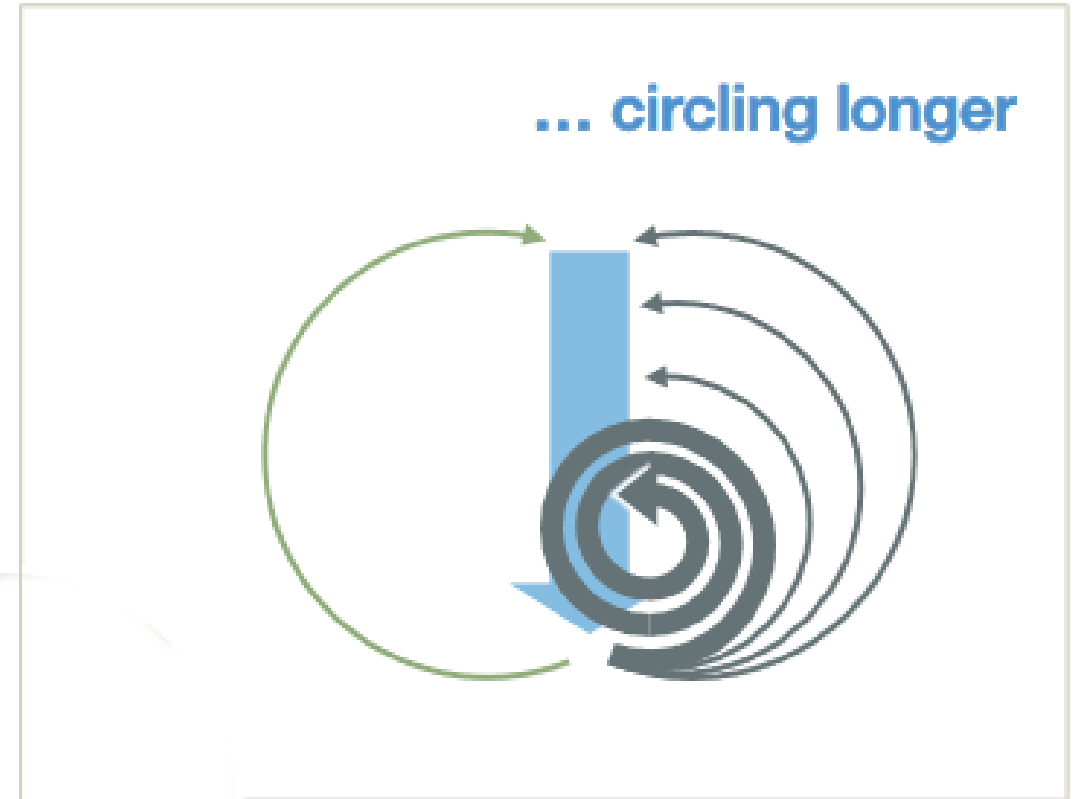
FRAMEWORK



Global resource extraction is estimated to increase by 119% from 2015 to 2050, with non-metallic minerals, used intensively in the construction sector, having the greatest impact.

FRAMEWORK

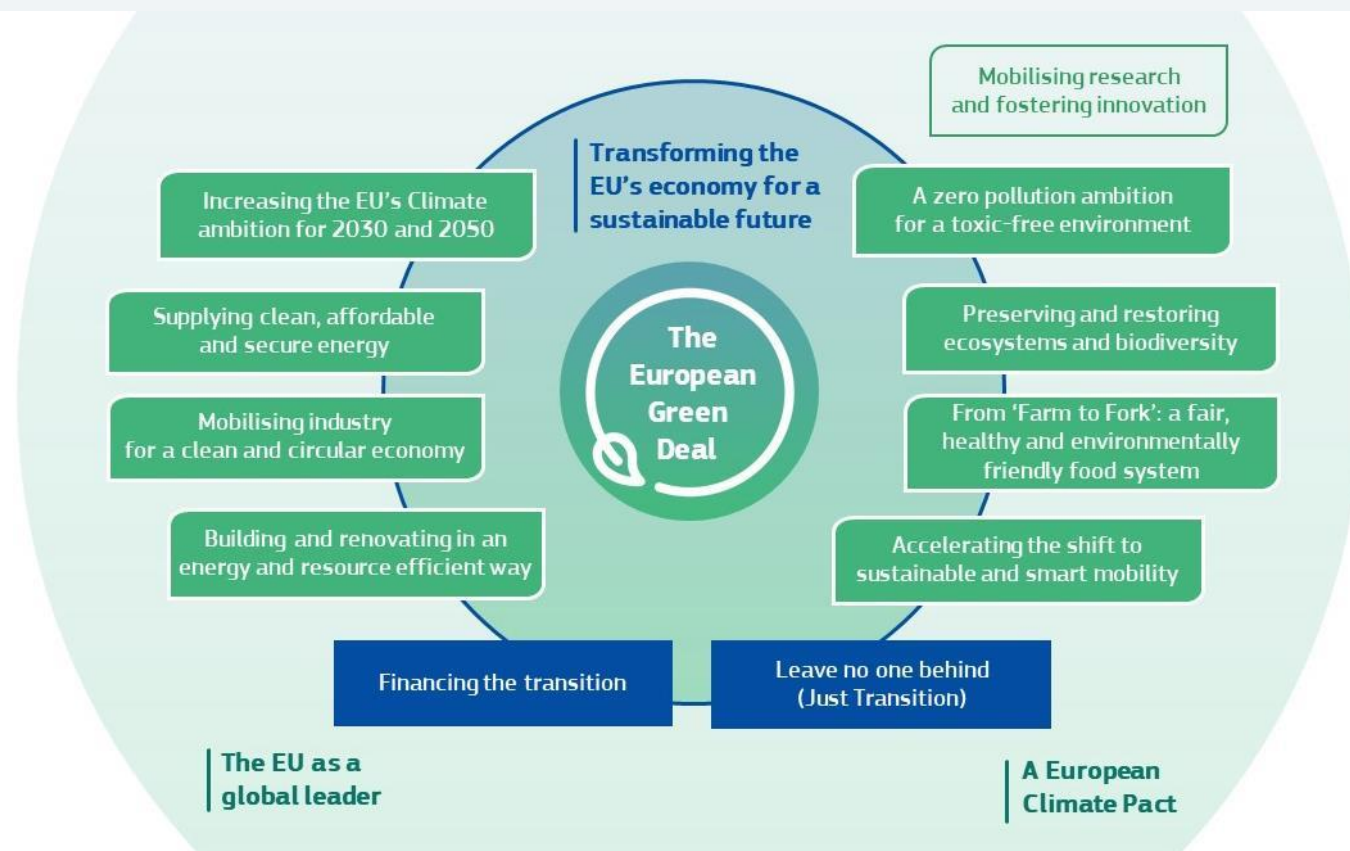
It is essential to move from a linear to a circular model of economy by promoting a longer permanence of resources in the economy.



"Towards the circular economy: accelerating the scale-up across global supply chains"

FRAMEWORK

The CLOSER project is part of the implementation of Agenda 2030 and the energy- and resource-efficient building and renovation part of the European Green Deal





Demolition or rehabilitation

OBJECTIVES

The CLOSER project aims to increase the reuse and recycling of materials from demolition or rehabilitation of buildings.

OBJECTIVES



Hazardous materials

Separate materials which constitute or contain hazardous substances to prevent contamination of materials to be recovered.

OBJECTIVES



Resources inventory

Improve the quality of recovered resources by identifying the types and quantities of materials present in demolition or rehabilitation.

OBJECTIVES

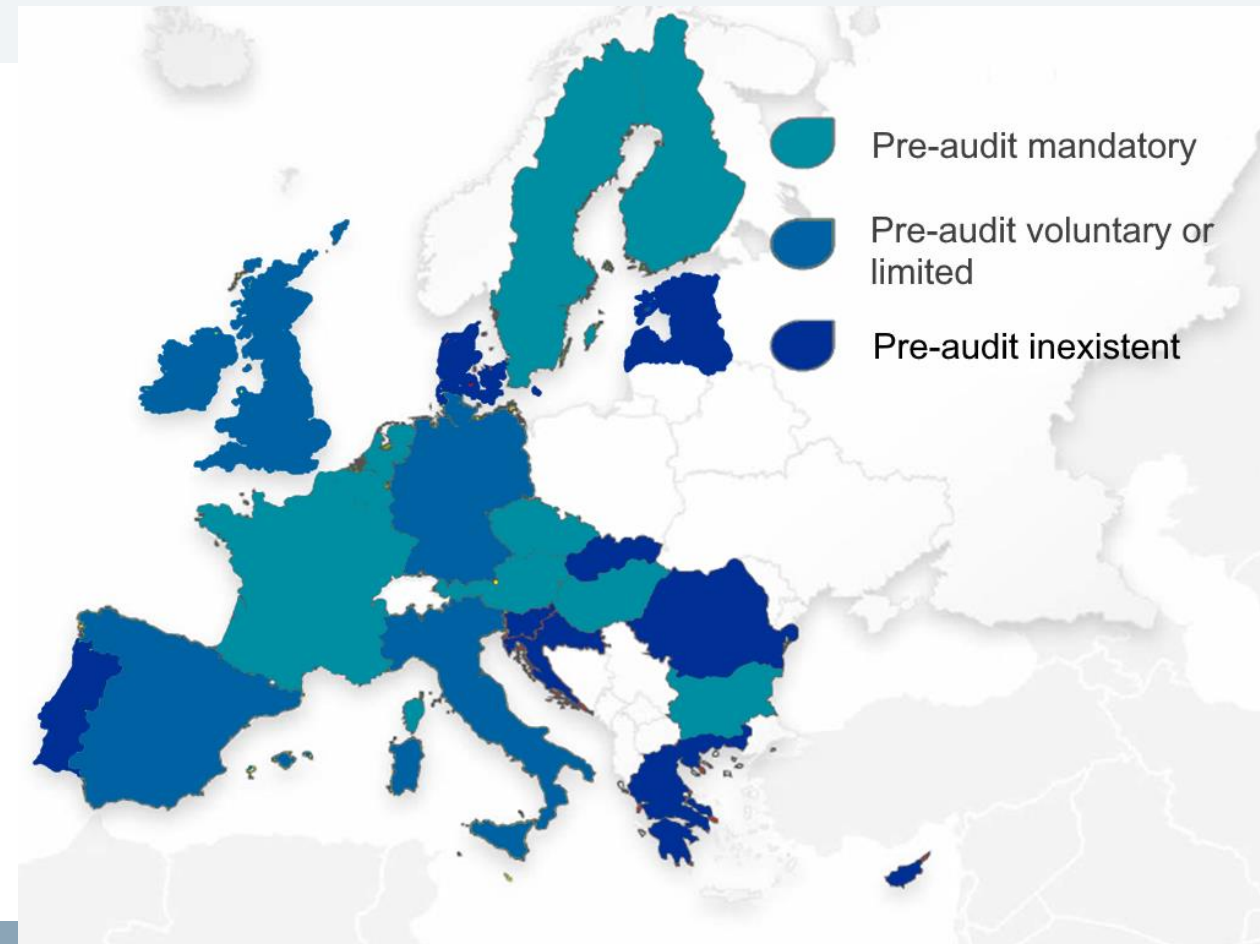


Recovery potential

To present solutions of application that lead to the closing of cycles of the recovered materials.

PROJECT TASKS

- Review of recommendations and systems of pre-demolition or rehabilitation audits in Member States.



PROJECT TASKS

- Survey of good practices in Portugal.
- Drafting of national recommendations.
- Definition of policies to implement the recommendations.
- Application to real cases.

PROJECT TASKS

The collaboration of the various stakeholders is very relevant for the development of the tasks of project CLOSER namely:

- Building rehabilitation and demolition companies;
- Waste management operators;
- Public authorities at local, regional and national levels.

RESULTS

Development of a
Portuguese guide for pre-
demolition or rehabilitation
of buildings audits





RESULTS

Benefits in terms of recovery rates and quality of materials from construction and demolition waste.

PARTNER ORGANISATIONS

Promoter



Partners



PARTNER ORGANISATIONS



LABORATÓRIO NACIONAL
DE ENGENHARIA CIVIL

In the last two decades, LNEC's multidisciplinary teams have developed research & innovation projects, at national and international level, in the processing and use of construction and demolition waste (CDW) for various applications.

In this context, they have developed six technical specifications that establish the minimum requirements and provide recommendations for the use of CDW in Portugal.

PARTNER ORGANISATIONS



The APA's vast experience in the areas of construction and demolition waste management policies, end-of-waste status and waste contamination articulated with the implementation of the actions foreseen in the Action Plan for the Circular Economy (PAEC) are fundamental for the development of the activities foreseen during the CLOSER project.

PARTNER ORGANISATIONS



In accordance with IMPIC's attributions, as stated in Decree-Law no. 232/2015, of 13 October, which approves the organization of this Institute, the commitment assumed with the promotion of sustainability and innovation in the construction sector, boosting or participating in strategic initiatives to improve the competitiveness and sustainability of construction companies, in harmony with the principles of the circular economy, stands out as a key factor for the CLOSER project development.

PROJECT DATA

Iceland 
Liechtenstein
Norway grants

03_SGS#2_CLOSER - Close to Resources Recovery

EEA Grants funding: 50 000,00 €

Total Funding: 58 816,48 €

Program: Environment

Starting Date: 1 October 2020

Duration: 12 months

About EEA Grants 2014-2021



Through the European Economic Area (EEA) Agreement, Iceland, Liechtenstein and Norway are partners, in the internal market, of the Member States of the European Union.

As a way of promoting a continuous and balanced strengthening of the economic and trade relations, the parties of the European Economic Area Agreement have established a Multiannual Financial Mechanism, known as the EEA Grants.

About EEA Grants 2014-2021



Through the EEA Grants, Iceland, Liechtenstein and Norway established the objective of reducing social and economic disparities in Europe by strengthening bilateral relations with the Beneficiary States.

For the period 2014-2021, a total contribution of EUR 2.8 billion was agreed for 15 beneficiary countries. Portugal will benefit from an amount of 102,7M€.

Find out more at eeagrants.gov.pt

About EEA Grants 2014-2021

Iceland 
Liechtenstein
Norway grants

Working together for a **green**,
competitive and **inclusive** Europe